

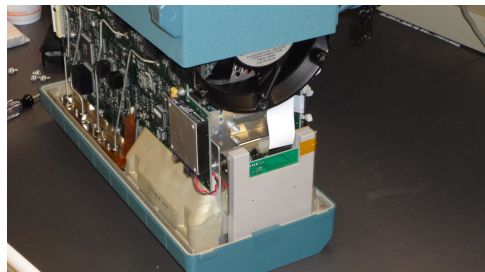
USB Floppy Emulator – Installation on Tektronix TDS500, TDS600 and TDS700 series Oscilloscopes



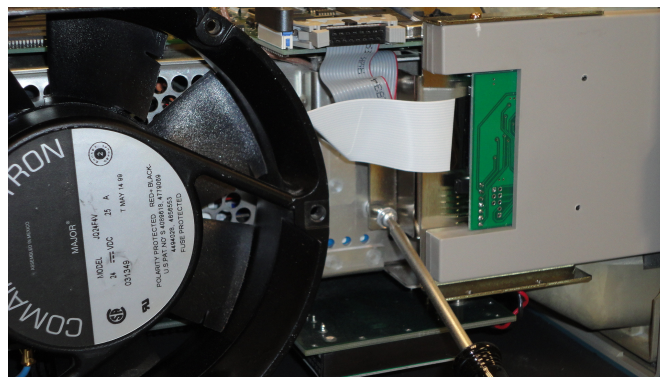
Remove 4 screws from rear bezel (T20 driver)



Remove rear bezel from scope



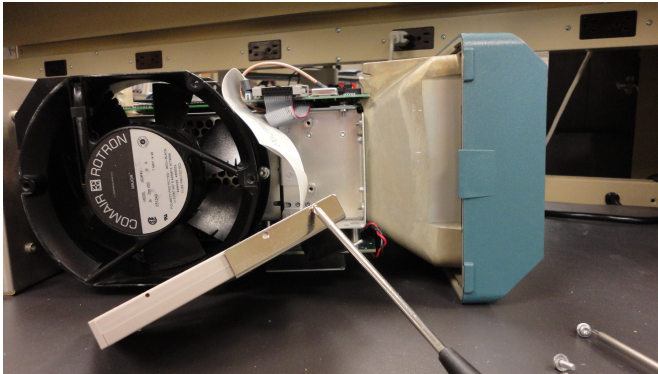
Place scope face down on thick soft material or front cover if available. Gently slide case upward to remove.



Remove 2 screws from floppy mounting bracket (T15 driver). Slide

bracket and floppy drive toward rear to remove.

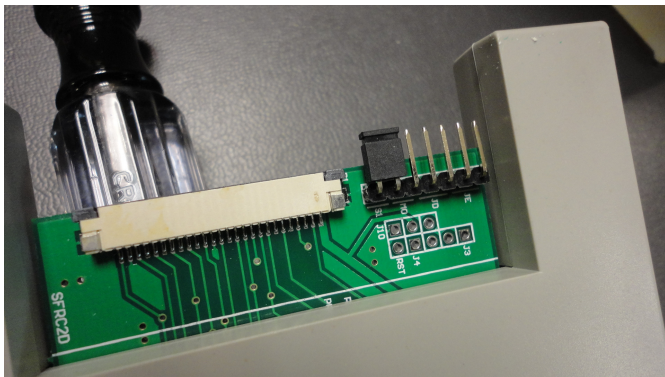
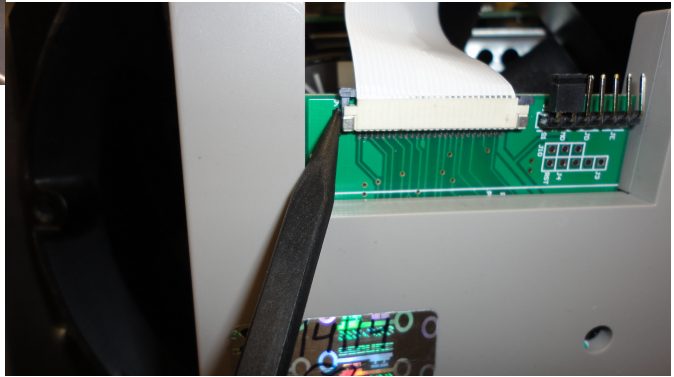
It may be necessary to temporarily remove the ribbon cable from the nearby connector if the locking ears interfere with drive removal.



Remove 2 screws that hold floppy drive to bracket.

Use plastic or wooden tool, gently lift up the cam that secures the flex cable. Some lift straight up, other types may swing up.

Installing emulator ...

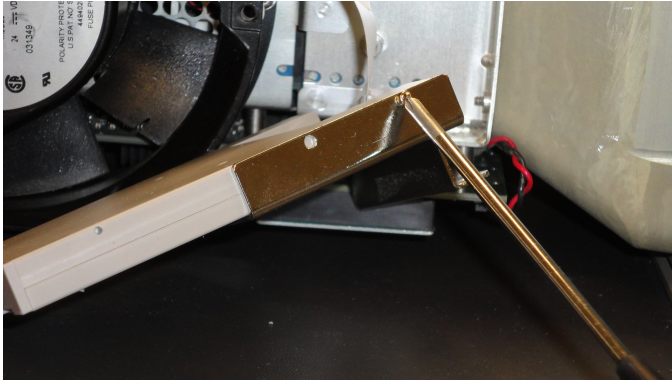


On the emulator, install only the jumper shown



Insert flex tail into emulator connector as far as possible and using a flat tool, gently press the

connector cam into place to secure the flex tail. When inserted correctly, the connector cam side ears will bottom out on the connector body. Verify that the flex tail and fingers are straight.



Secure emulator to floppy bracket with only one screw (one of the original

floppy screws fits better than the new screws supplied with the emulator in this instance). The floppy drive was wider than the emulator as it had allowance for an end located floppy eject button on some models. The emulator will be secured by the single screw and the front bezel of the scope.

Continue with installation of emulator and floppy drive bracket, case and rear bezel installation, reversing the floppy drive removal directions.

CAUTION: On different models in this series of scopes, use caution that various large, protruding heat sinks are not disturbed as you slide the case back into place.



The gap between the emulator and the wider Tektronix bezel opening can be covered with a small

label or calibration sticker as shown in this example on a TDS694C.